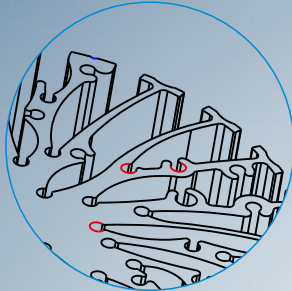


Unique and Innovative by Mingfa Tech

EtraLED series

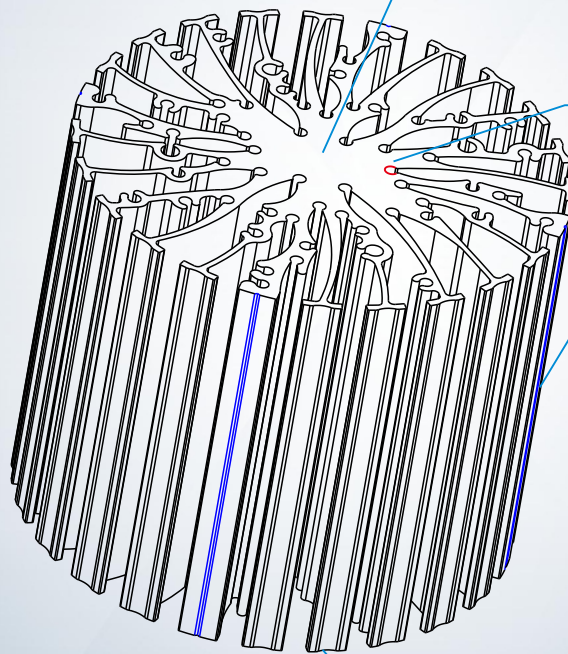
www.heatsinkled.com



Installing fan, drivers and others on top if needed



Compatible with more than 20 COB brands covering 85-95% modules.

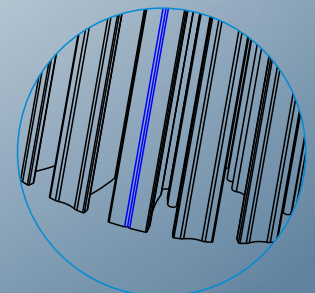


Flexible mounting hole options to avoid inventory pressure

Use AL-6063-T5 material by extrusion Customized for height ≥ 20 mm

Ideal for high-end commercial lighting like down light, spot light & track light, etc.

EtraLED Series Specification					
Item No.	Diameter (mm)	Height (mm)	Thermal Resistance	Thermal Max Wattage	N.W
EtraLED-48	φ48mm	20mm	6.25°C/W	8W	53.3g
		50mm	4.2°C/W	12W	134g
		80mm	3.6°C/W	14W	213g
EtraLED-70	φ70mm	20mm	3.57°C/W	14W	77g
		50mm	2.2°C/W	22.9W	192g
		80mm	1.8°C/W	28.1W	308g
EtraLED-85	φ85mm	20mm	2°C/W	25W	115G
		50mm	1.5°C/W	34W	286g
		80mm	1.3°C/W	38W	458g
EtraLED-96	φ96mm	20mm	1.8°C/W	28W	144g
		50mm	1.2°C/W	37.5W	360g
		80mm	0.92°C/W	49.2W	575g
EtraLED-110	φ110mm	20mm	1.5°C/W	33W	165g
		50mm	1.1°C/W	48W	414g
		80mm	0.9°C/W	57W	662g
EtraLED-130	φ130mm	20mm	1.1°C/W	42W	274g
		50mm	0.9°C/W	56.5W	684g
		80mm	0.7°C/W	70.6W	1108g
		100mm	0.65°C/W	76.2W	1300g



With 15% higher efficiency in heat dissipation than normal star heatsinks